

Measure 4 **Age of Active Pending Caseloads** ALL JUDGES (12/31/2020)

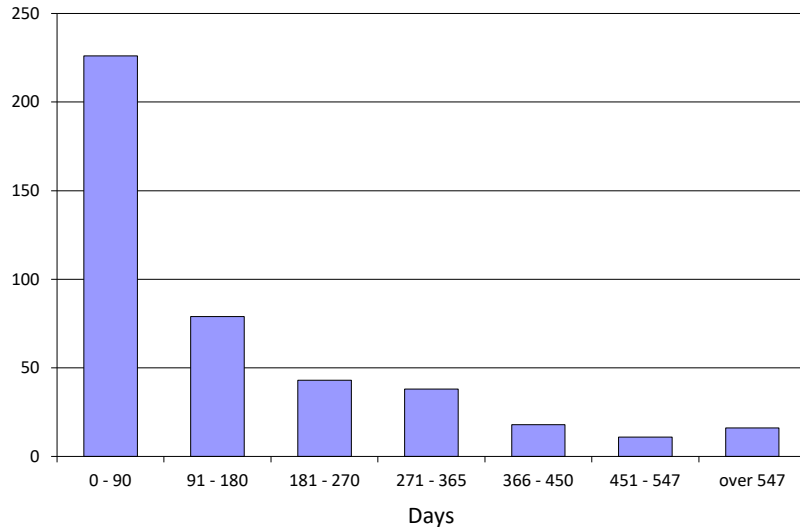


CourTools

**A - Marriage Terminations with Children**

Age (Days)	Number of Cases	Percent	Cumulative Percent
0 - 90	226	52%	52%
91 - 180	79	18%	71%
181 - 270	43	10%	81%
271 - 365	38	9%	90%
366 - 450	18	4%	94%
451 - 547	11	3%	96%
over 547	16	4%	100%

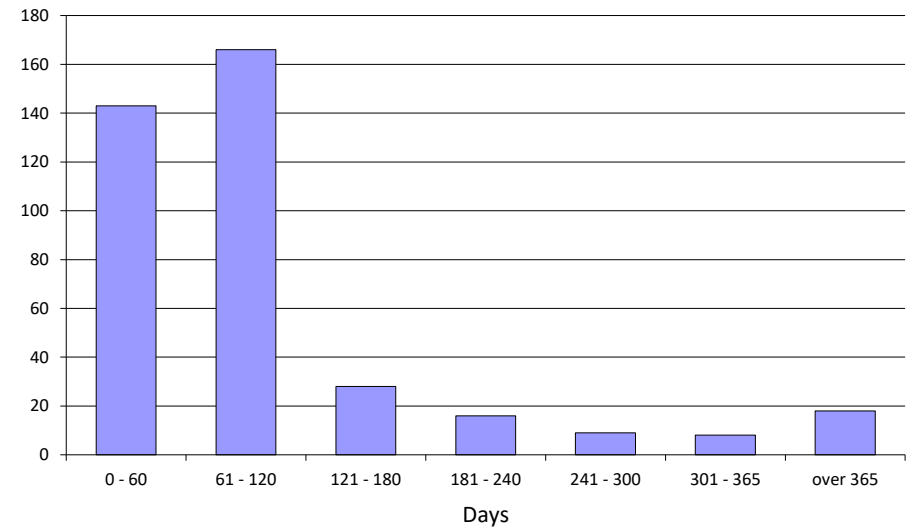
**Total 431**



**B - Marriage Terminations without Children**

Age (Days)	Number of Cases	Percent	Cumulative Percent
0 - 60	143	37%	37%
61 - 120	166	43%	80%
121 - 180	28	7%	87%
181 - 240	16	4%	91%
241 - 300	9	2%	93%
301 - 365	8	2%	95%
over 365	18	5%	100%

**Total 388**



Measure 4 **Age of Active Pending Caseloads** ALL JUDGES (12/31/2020)

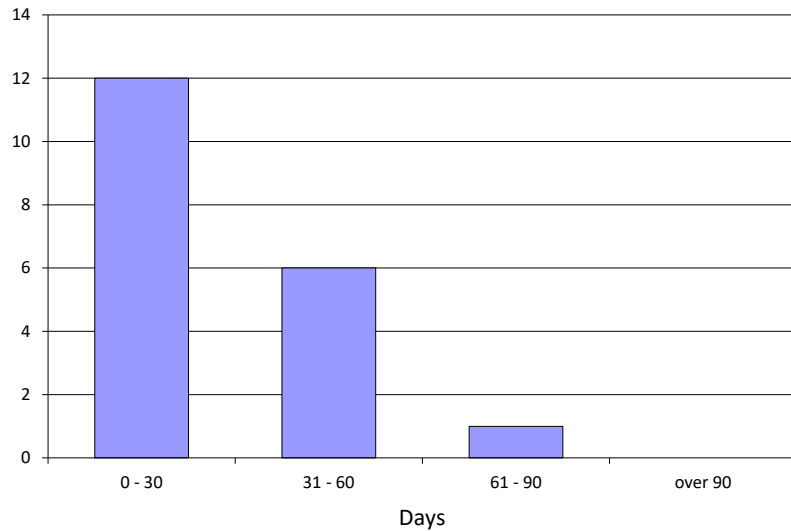


CourTools

**C - Marriage Dissolutions with Children**

Age (Days)	Number of Cases	Percent	Cumulative Percent
0 - 30	12	63%	63%
31 - 60	6	32%	95%
61 - 90	1	5%	100%
over 90	0	0%	100%

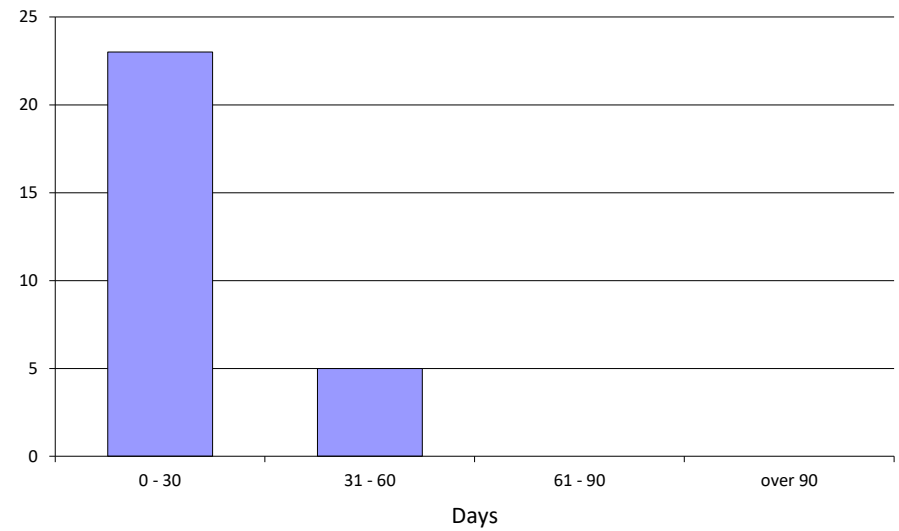
**Total 19**



**D - Marriage Dissolutions without Children**

Age (Days)	Number of Cases	Percent	Cumulative Percent
0 - 30	23	82%	82%
31 - 60	5	18%	100%
61 - 90	0	0%	100%
over 90	0	0%	100%

**Total 28**



Measure 4 **Age of Active Pending Caseloads** ALL JUDGES (12/31/2020)

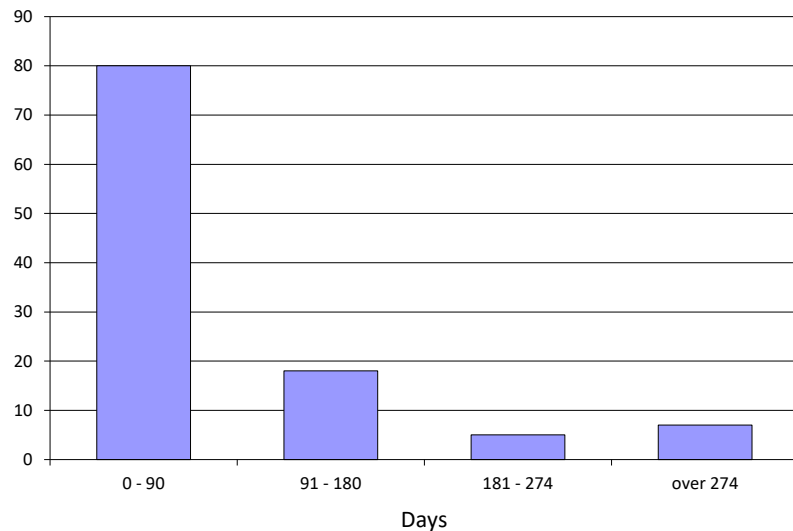


CourTools

**E - Change of Custody**

Age (Days)	Number of Cases	Percent	Cumulative Percent
0 - 90	80	73%	73%
91 - 180	18	16%	89%
181 - 274	5	5%	94%
over 274	7	6%	100%

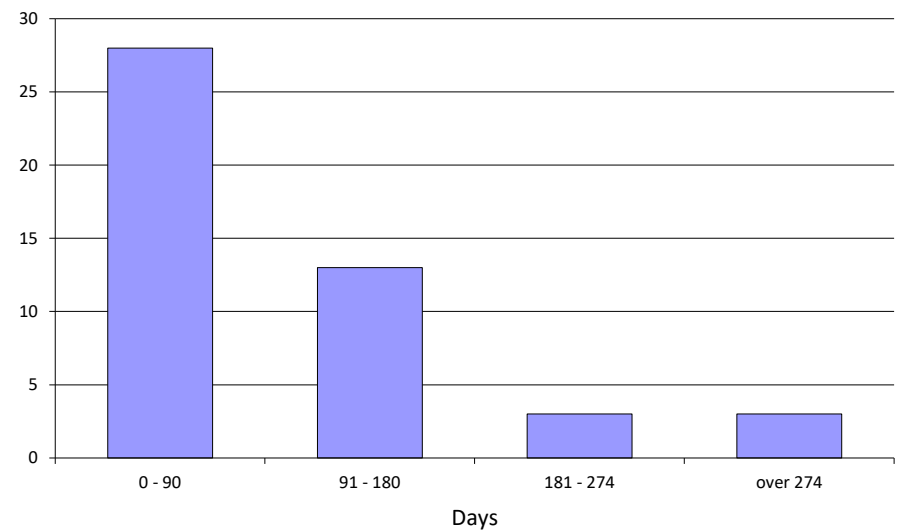
**Total 110**



**F - Visitation Enforcement or Modification**

Age (Days)	Number of Cases	Percent	Cumulative Percent
0 - 90	28	60%	60%
91 - 180	13	28%	87%
181 - 274	3	6%	94%
over 274	3	6%	100%

**Total 47**



Measure 4 **Age of Active Pending Caseloads** ALL JUDGES (12/31/2020)

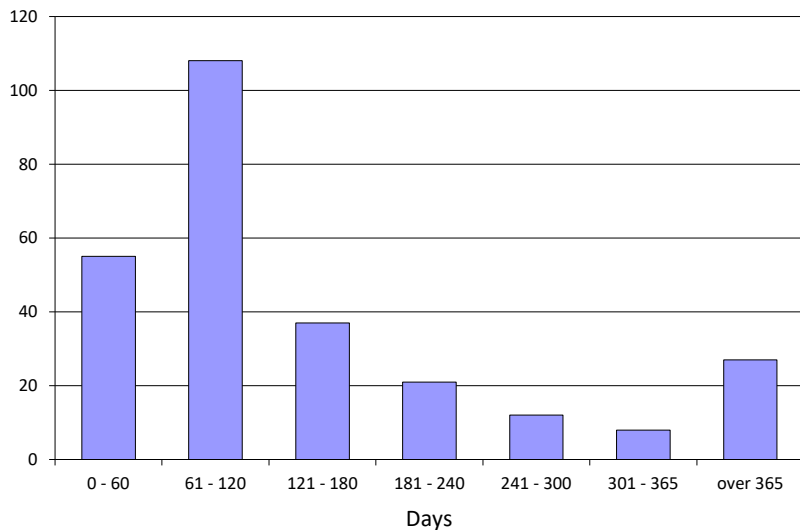


CourTools

**G - Support Enforcement or Modification**

Age (Days)	Number of Cases	Percent	Cumulative Percent
0 - 60	55	21%	21%
61 - 120	108	40%	61%
121 - 180	37	14%	75%
181 - 240	21	8%	82%
241 - 300	12	4%	87%
301 - 365	8	3%	90%
over 365	27	10%	100%

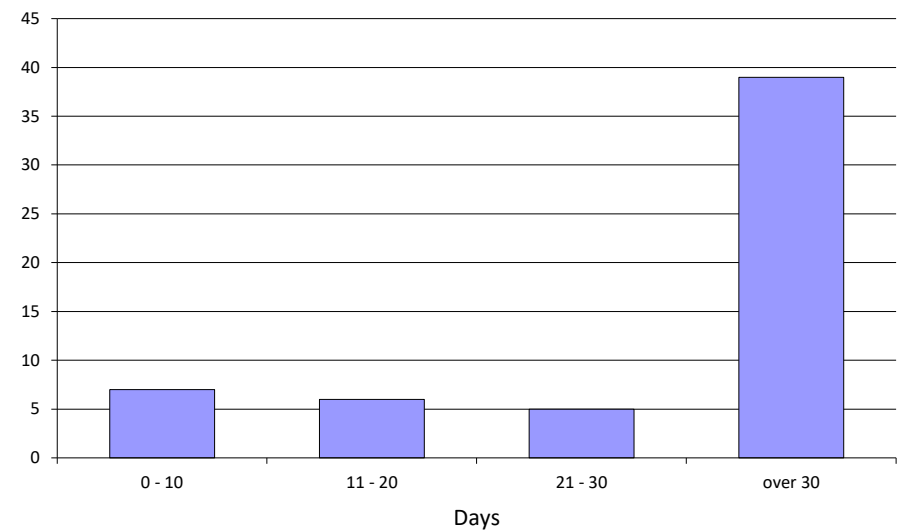
**Total 268**



**H - Domestic Violence**

Age (Days)	Number of Cases	Percent	Cumulative Percent
0 - 10	7	12%	12%
11 - 20	6	11%	23%
21 - 30	5	9%	32%
over 30	39	68%	100%

**Total 57**



Measure 4 **Age of Active Pending Caseloads** ALL JUDGES (12/31/2020)

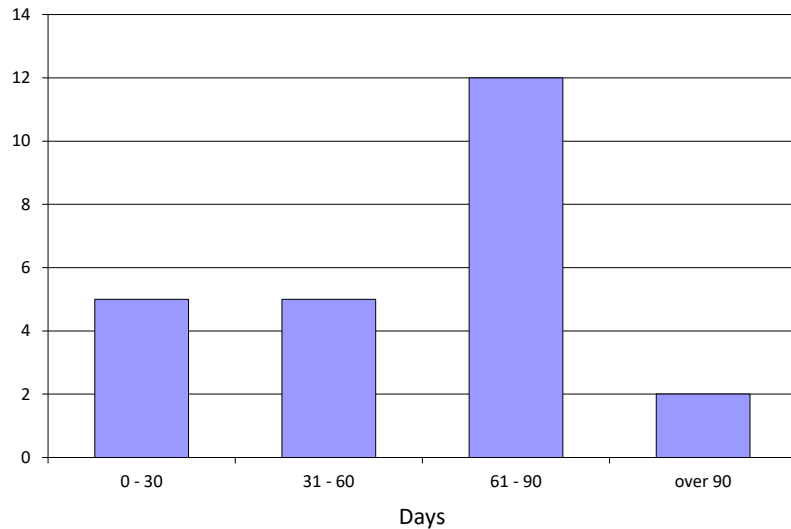


CourTools

**I - URESA**

Age (Days)	Number of Cases	Percent	Cumulative Percent
0 - 30	5	21%	21%
31 - 60	5	21%	42%
61 - 90	12	50%	92%
over 90	2	8%	100%

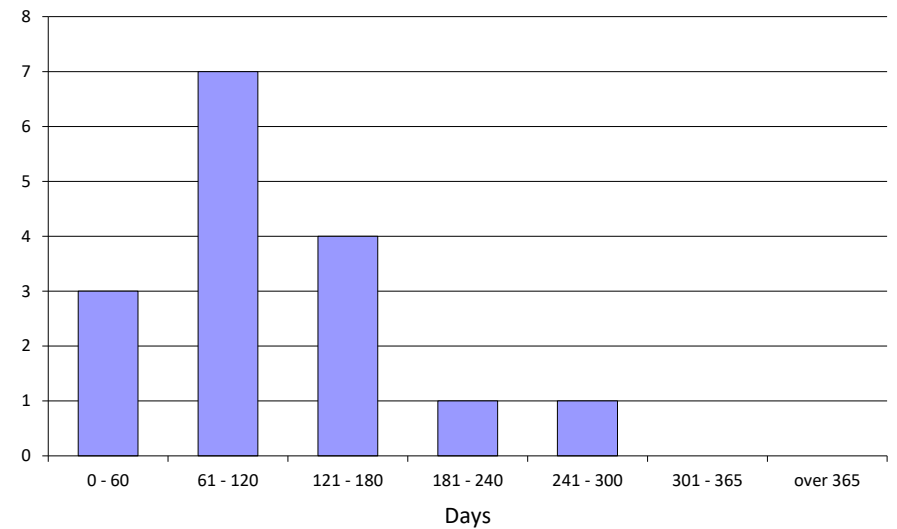
**Total 24**



**J - Parentage**

Age (Days)	Number of Cases	Percent	Cumulative Percent
0 - 60	3	19%	19%
61 - 120	7	44%	63%
121 - 180	4	25%	88%
181 - 240	1	6%	94%
241 - 300	1	6%	100%
301 - 365	0	0%	100%
over 365	0	0%	100%

**Total 16**

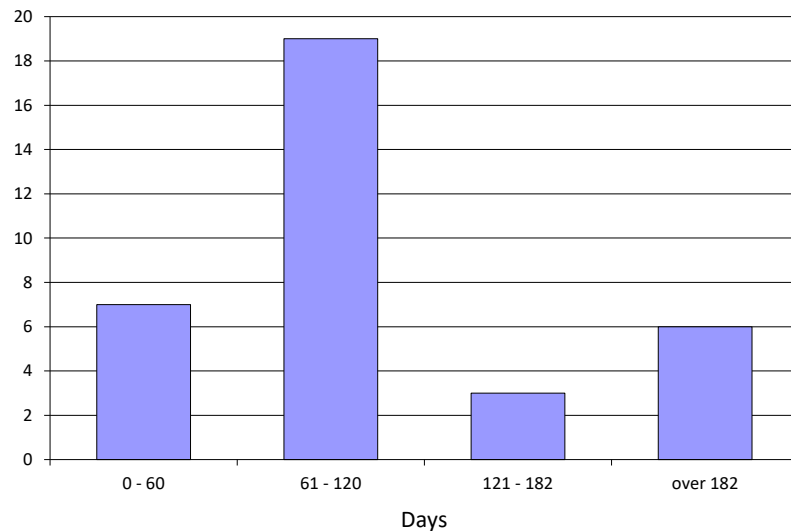


Measure 4 **Age of Active Pending Caseloads** ALL JUDGES (12/31/2020)

**K - All Others**

Age (Days)	Number of Cases	Percent	Cumulative Percent
0 - 60	7	20%	20%
61 - 120	19	54%	74%
121 - 182	3	9%	83%
over 182	6	17%	100%

**Total 35**



CourTools