

Measure 3 Time to Disposition ALL JUDGES (01/01/2013 - 12/31/2013)

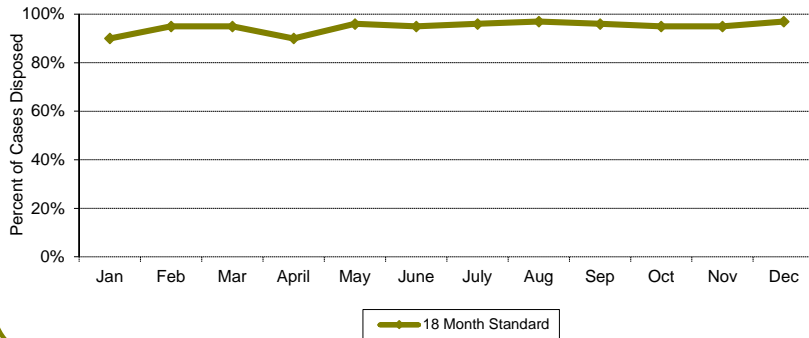


CourTools

A - Marriage Termination With Children

Month	Percentage of Cases Disposed		Number of Days	
	Cases	< 18 Months	Mean	Median
Jan	240	90%	189	144
Feb	100	95%	196	183
Mar	91	95%	167	144
April	118	90%	191	140
May	105	96%	162	96
June	96	95%	192	122
July	114	96%	188	146
Aug	98	97%	158	129
Sep	88	96%	186	138
Oct	101	95%	191	172
Nov	69	95%	163	108
Dec	99	97%	154	109
	<b>1319</b>	<b>0.9</b>		

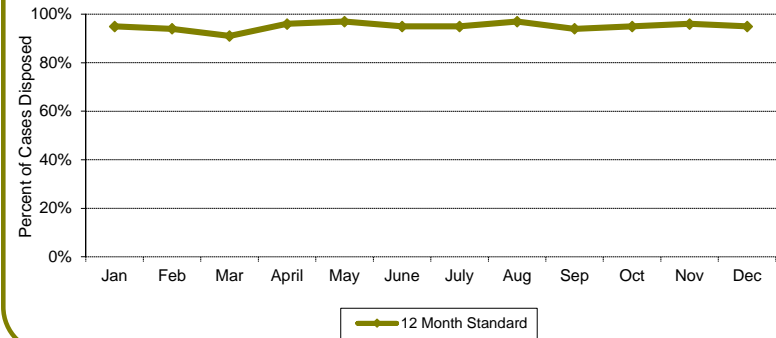
Time to Disposition - 18 Months Time Standard



B - Marriage Termination without Children

Month	Percentage of Cases Disposed		Number of Days	
	Cases	< 12 Months	Mean	Median
Jan	218	95%	118	91
Feb	95	94%	147	111
Mar	113	91%	143	104
April	116	96%	139	117
May	143	97%	136	89
June	147	95%	144	104
July	144	95%	129	98
Aug	106	97%	123	92
Sep	135	94%	117	84
Oct	149	95%	132	94
Nov	90	96%	129	92
Dec	122	95%	128	99
	<b>1578</b>	<b>1.0</b>		

Time to Disposition - 12 Months Time Standard



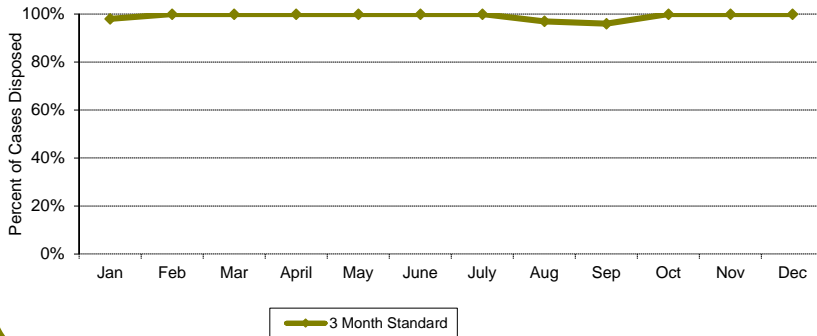
Measure 3 Time to Disposition ALL JUDGES (01/01/2013 - 12/31/2013)



C - Marriage Dissolutions with Children

Month	Percentage of Cases Disposed		Number of Days	
	Cases	< 3 Months	Mean	Median
Jan	69	98%	43	43
Feb	31	100%	49	43
Mar	42	100%	43	41
April	47	100%	44	42
May	42	100%	46	41
June	34	100%	51	48
July	58	100%	47	43
Aug	47	97%	49	43
Sep	32	96%	48	42
Oct	40	100%	47	43
Nov	38	100%	52	48
Dec	38	100%	46	41
	<b>518</b>	<b>1.0</b>		

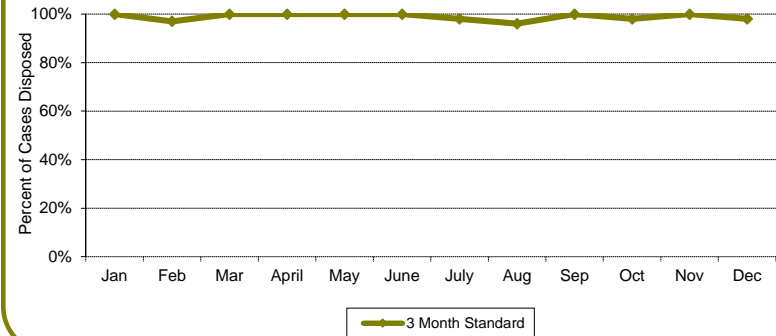
Time to Disposition - 3 Month Time Standard



D - Marriage Dissolutions without Children

Month	Percentage of Cases Disposed		Number of Days	
	Cases	< 3 Months	Mean	Median
Jan	53	100%	36	35
Feb	46	97%	44	39
Mar	45	100%	42	41
April	72	100%	44	41
May	47	100%	41	39
June	58	100%	44	45
July	63	98%	42	40
Aug	63	96%	44	39
Sep	56	100%	46	42
Oct	66	98%	46	42
Nov	47	100%	41	40
Dec	60	98%	47	43
	<b>676</b>	<b>1.0</b>		

Time to Disposition - 3 Month Time Standard



Measure 3 Time to Disposition ALL JUDGES (01/01/2013 - 12/31/2013)



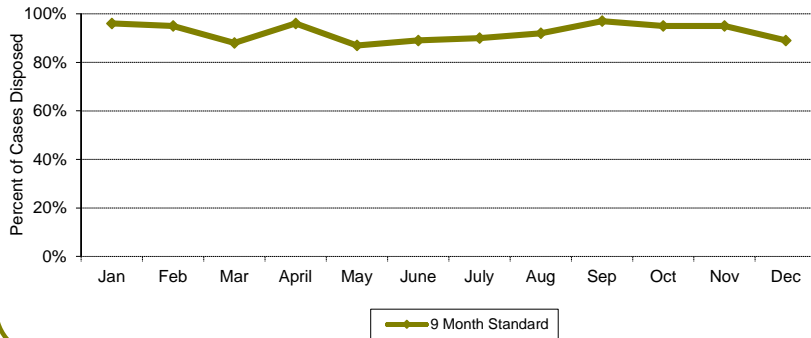
CourTools

E - Change of Custody

Month	Percentage of Cases Disposed		Number of Days	
	Cases	< 9 Months	Mean	Median
Jan	61	96%	95	63
Feb	41	95%	131	109
Mar	34	88%	110	66
April	31	96%	83	35
May	31	87%	123	84
June	39	89%	78	36
July	31	90%	93	38
Aug	50	92%	78	33
Sep	36	97%	55	31
Oct	47	95%	97	54
Nov	43	95%	84	40
Dec	28	89%	102	75

472 0.9

Time to Disposition - 9 Month Time Standard

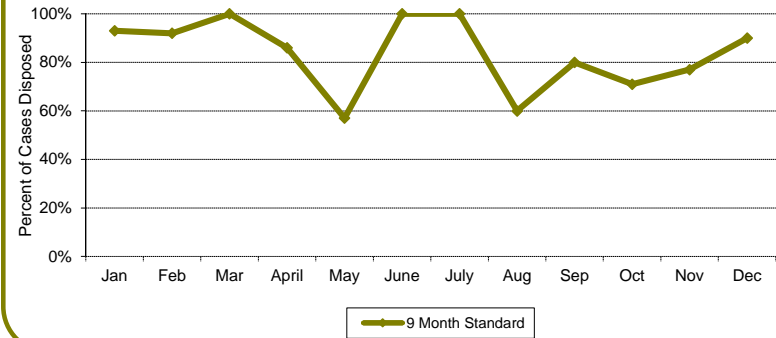


F - Visitation Enforcement or Modification

Month	Percentage of Cases Disposed		Number of Days	
	Cases	< 9 Months	Mean	Median
Jan	30	93%	102	70
Feb	13	92%	129	97
Mar	10	100%	72	51
April	15	86%	125	40
May	7	57%	220	61
June	17	100%	62	40
July	7	100%	98	26
Aug	5	60%	358	87
Sep	10	80%	118	63
Oct	7	71%	167	70
Nov	9	77%	121	78
Dec	11	90%	113	85

141 0.8

Time to Disposition - 9 Month Time Standard



Measure 3 Time to Disposition ALL JUDGES (01/01/2013 - 12/31/2013)



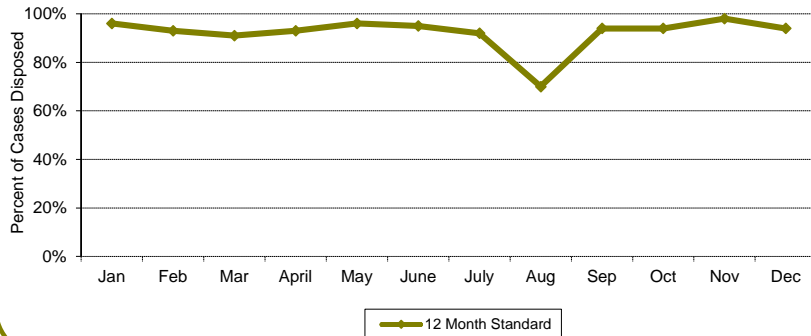
CourTools

G - Support Enforcement or Modification

Month	Percentage of Cases Disposed		Number of Days	
	Cases	< 12 Months	Mean	Median
Jan	193	96%	152	138
Feb	87	93%	176	147
Mar	71	91%	172	141
April	80	93%	153	121
May	65	96%	146	113
June	91	95%	156	117
July	85	92%	152	120
Aug	85	70%	290	173
Sep	72	94%	141	119
Oct	74	94%	141	115
Nov	72	98%	133	122
Dec	76	94%	155	116

1051 0.9

Time to Disposition - 12 Month Time Standard

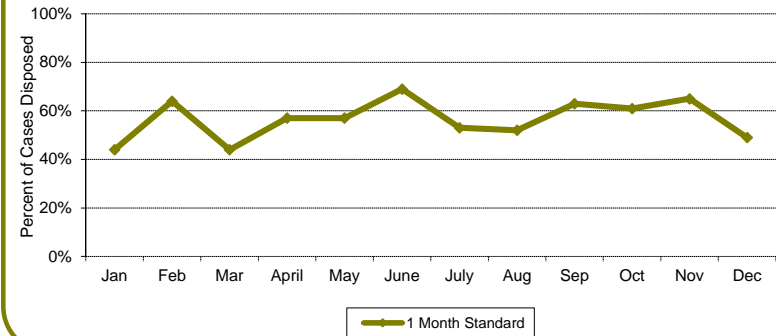


H - Domestic Violence

Month	Percentage of Cases Disposed		Number of Days	
	Cases	< 1 Month	Mean	Median
Jan	77	44%	45	27
Feb	48	64%	25	18
Mar	38	44%	57	18
April	54	57%	29	14
May	47	57%	28	16
June	52	69%	24	13
July	60	53%	32	17
Aug	67	52%	32	16
Sep	57	63%	38	16
Oct	52	61%	26	16
Nov	43	65%	33	19
Dec	53	49%	32	19

648 0.6

Time to Disposition - 1 Month Time Standard



Measure 3 Time to Disposition ALL JUDGES (01/01/2013 - 12/31/2013)



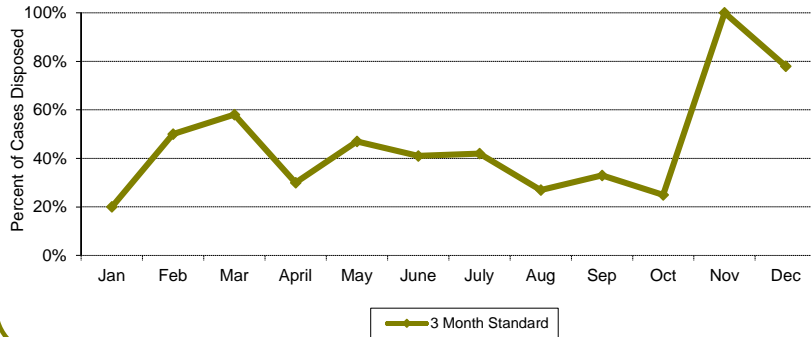
CourTools

I - URESA

Month	Percentage of Cases Disposed		Number of Days	
	Cases	< 3 Months	Mean	Median
Jan	30	20%	79	88
Feb	22	50%	103	79
Mar	12	58%	101	86
April	10	30%	129	104
May	21	47%	89	86
June	12	41%	117	92
July	14	42%	111	98
Aug	11	27%	102	114
Sep	9	33%	115	95
Oct	8	25%	124	115
Nov	16	100%	60	55
Dec	19	78%	82	78

184 0.5

Time to Disposition - 3 Month Time Standard

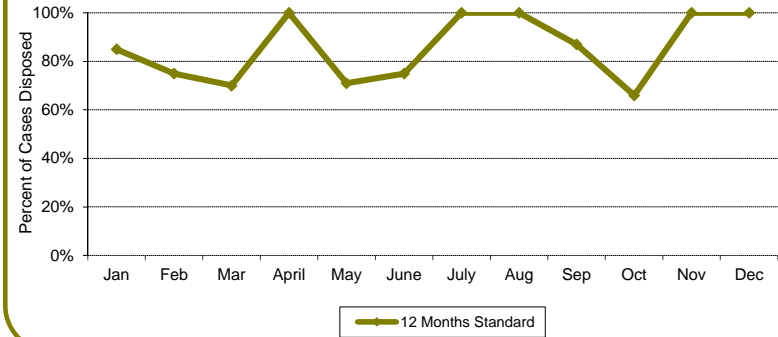


J - Parentage

Month	Percentage of Cases Disposed		Number of Days	
	Cases	< 12 Months	Mean	Median
Jan	21	85%	199	190
Feb	8	75%	235	205
Mar	10	70%	169	207
April	3	100%	192	73
May	7	71%	262	281
June	4	75%	322	327
July	6	100%	202	159
Aug	7	100%	231	207
Sep	8	87%	249	204
Oct	3	66%	336	296
Nov	2	100%	226	225
Dec	3	100%	141	129

82 0.9

Time to Disposition - 12 Month Time Standard



Measure 3 Time to Disposition ALL JUDGES (01/01/2013 - 12/31/2013)



CourTools

K - All Others

Month	Percentage of Cases Disposed		Number of Days	
	Cases	< 6 Months	Mean	Median
Jan	24	70%	139	132
Feb	10	100%	111	108
Mar	10	80%	108	111
April	9	100%	89	43
May	12	91%	135	114
June	8	62%	157	124
July	6	83%	120	132
Aug	11	72%	154	71
Sep	19	84%	127	83
Oct	13	61%	175	139
Nov	10	70%	189	135
Dec	15	86%	129	131
	147	0.8		

Type	# Cases
A	1319
B	1578
C	518
D	676
E	472
F	141
G	1051
H	648
I	184
J	82
K	147
<b>TOTAL:</b>	<b>6816</b>

Time to Disposition - 6 Month Time Standard

